

HYDROPLUS COATING SYSTEMS FOR ACCOYA® AND TRICOYA® WOOD



 **SAYERLACK**[®]
INNOVATIVE WOOD SOLUTIONS

accoya [®]

tricoya [®]



THE USE OF WOOD IN JOINERY AND CLADDING

Wood is one of the oldest building materials and it's playing an increasingly important role in modern joinery for several reasons.

- **Aesthetic appeal:** Wood offers a natural and warm appearance, with versatile finishes — translucent or pigmented, rustic or modern.
- **Thermal and acoustic insulation:** Wood is an excellent insulator, capable of reducing heat transmission and minimizing noise.
- **Sustainability:** When sourced from certified forests (FSC® & PEFC®), wood is environmentally responsible and recyclable in various ways.
- **Ease of processing, repair, and maintenance:** Wood can be easily machined, repaired in place, and repainted when needed.
- **Durability:** When properly treated, wooden structures can last for decades.

To ensure durability, wood often requires treatments such as biocidal treatments to protect against fungal and insect damage. For this reason, exotic hardwoods with natural resistance are sometimes used, although they are typically sourced from distant, slow-growing forests—unlike softwoods from locally cultivated forests.

accoya 

tricoya 

ACCOYA®: A TECHNOLOGICALLY ENHANCED WOOD

Accoya® is an engineered wood derived from sustainably sourced softwood that undergoes a **specialized acetylation process**. This process permanently alters the wood's chemical structure, transforming it into a high-performance material known as Accoya®.

Accoya® preserves the natural advantages of wood—like sustainability, easy machining, and low maintenance—while delivering superior technical performance:

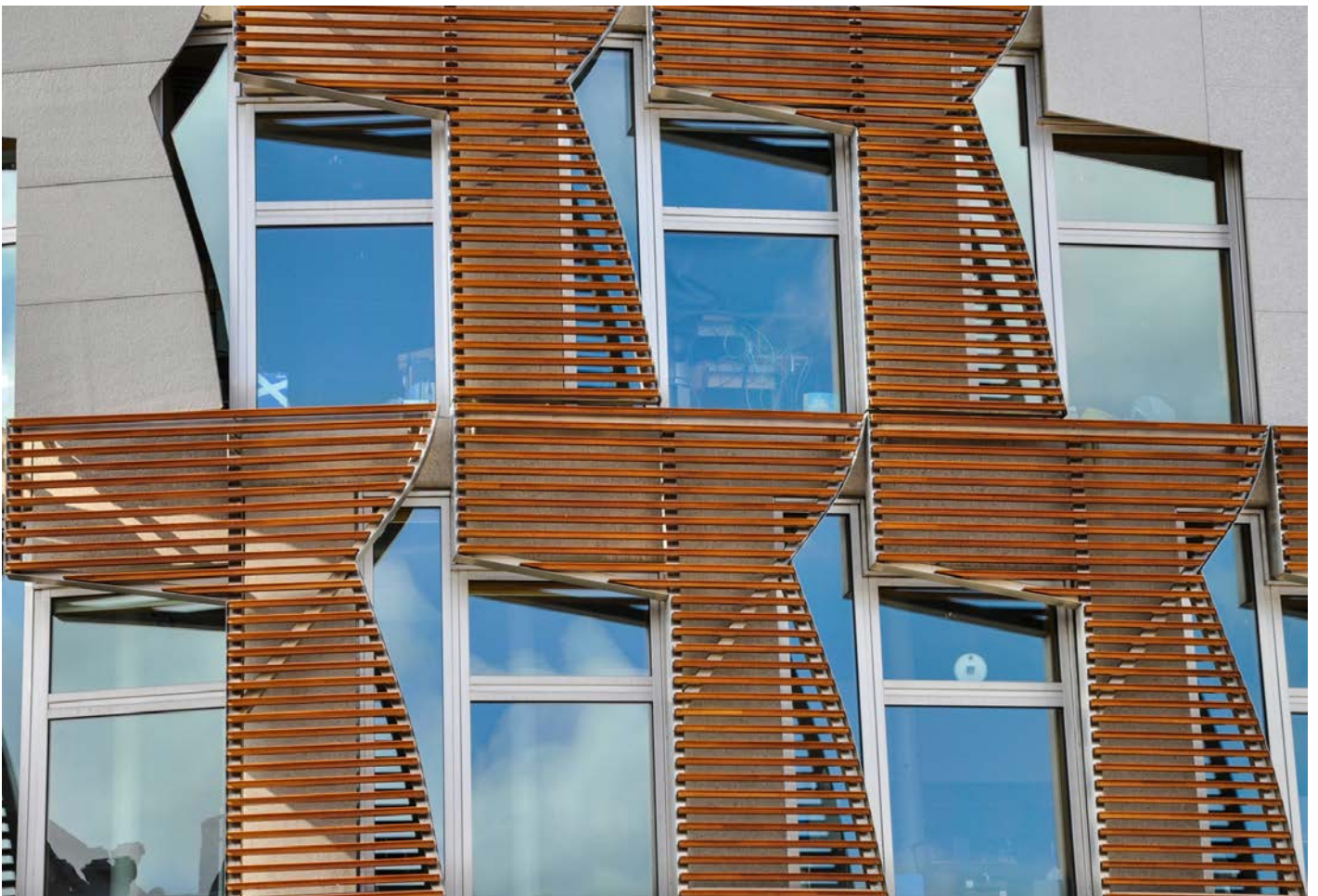
- **Exceptional resistance** to biological attacks from fungi and insects.
- **Outstanding dimensional stability**, with virtually no swelling—even under high humidity or direct contact with water.

An additional product, **Tricoya®**, is a MDF panel made using Accoya® technology. It offers similar improvements in stability and resistance, especially in high-humidity environments.

WHY CHOOSE ACCOYA® FOR JOINERY, CLADDING AND EXTERNAL TIMBER FEATURES

Thanks to its enhanced properties, Accoya® is a viable alternative to exotic hardwoods for joinery applications such as windows and doors. Its dimensional stability and biological resistance make it **highly durable in demanding conditions** and also for sunshade systems.

When coated with **Sayerlack finishes**, Accoya® achieves even greater durability. This allows us to extend our standard **Exterior Anti-Age Warranty** from the usual 10 years to an impressive **15 years**.



HYDROPLUS WATERBORNE CLEAR COATING SYSTEMS FOR ACCOYA® WOOD

Below, the correct finishing process to achieve the desired performance and ensure long-term reliability.

FINISH	APPLICATION METHOD	HYDROPLUS PRODUCT TYPE	PRODUCT FAMILY	QUANTITY TO APPLY	NOTES
CLEAR SYSTEM 1 (spray system)	Layer 1 - Spray	Harmonizing waterborne wood stain for exterior	AM0504/XX	50-70 g/m ²	(**)
	Layer 2 - Spray	Clear waterborne basecoat for exteriors	AM0475/XX	150-200 g/m ²	(*)
	Layer 3 - Spray	Clear waterborne topcoat for exteriors	AZ35XX/XX	150-200 g/m ²	(*)
CLEAR SYSTEM 2 (flow coating system)	Layer 1 - Flow-coating	Harmonizing waterborne wood stain for exterior	AM0504/XX	50-70 g/m ²	(**)
	Layer 2 - Flow-coating	Waterborne intermediate barrier basecoat	AM0485/00	90-120 g/m ²	
	Layer 3 - Spray	Clear waterborne topcoat for exteriors	AZ35XX/XX	250-300 g/m ²	(*)

Notes:

(*) For clear systems, we recommend adding 0,2 % of XA4034/XX or their mix, in order to achieve minimum colour protection; a dark shade (suggested value: 92) is recommended.

(**) For clear systems, we recommend adding 3-5 % of XA4034/XX or their mix, in order to achieve minimum colour protection; a dark shade (suggested value: 92) is recommended.

HYDROPLUS WATERBORNE PIGMENTED COATING SYSTEMS FOR ACCOYA® AND TRICOYA® WOOD

Below, the correct finishing process to achieve the desired performance and ensure long-term reliability.

FINISH	APPLICATION METHOD	HYDROPLUS PRODUCT TYPE	PRODUCT FAMILY	QUANTITY TO APPLY	NOTES
PIGMENTED SYSTEM 1 (spray system)	Layer 1 -Spray	Pigmented waterborne barrier basecoat for exterior-white	AM0495/13	150-200 g/m ²	
	Layer 2 -Spray	Pigmented waterborne converter for tintometric system	AZ35XX/XX	150-200 g/m ²	(***)
PIGMENTED SYSTEM 2 (flow-coating system)	Layer 1 - Flow-coating	Waterborne intermediate barrier basecoat	AM0485/13	90-120 g/m ²	
	Layer 2 - Spray	Pigmented waterborne converter for tintometric system	AZ35XX/XX	250-300 g/m ²	(***)

Notes:

(***) For pigmented systems the topcoat AZ35XX/NN or AZ35XX/BB; BB is possible to stain with tinting paste XA2006/XX in colour on demand or can be used as-is for a pure white finish; NN should always be stained with tinting paste XA2006/XX according to the formula of tinting system to match full covering colour.

- Pigmented systems are suitable also for Tricoya®.

- The detailed information about product are already present in Sayerlack exterior catalogue.





Sherwin-Williams Italy S.r.l.
Via del Fiffò 12 - 40065 Pianoro (BO) - Italia
Tel. +39 051 770511 - Fax +39 051 777437
export@sayerlack.it - www.sayerlack.com

Sayerlack is a brand of
The Sherwin-Williams Company