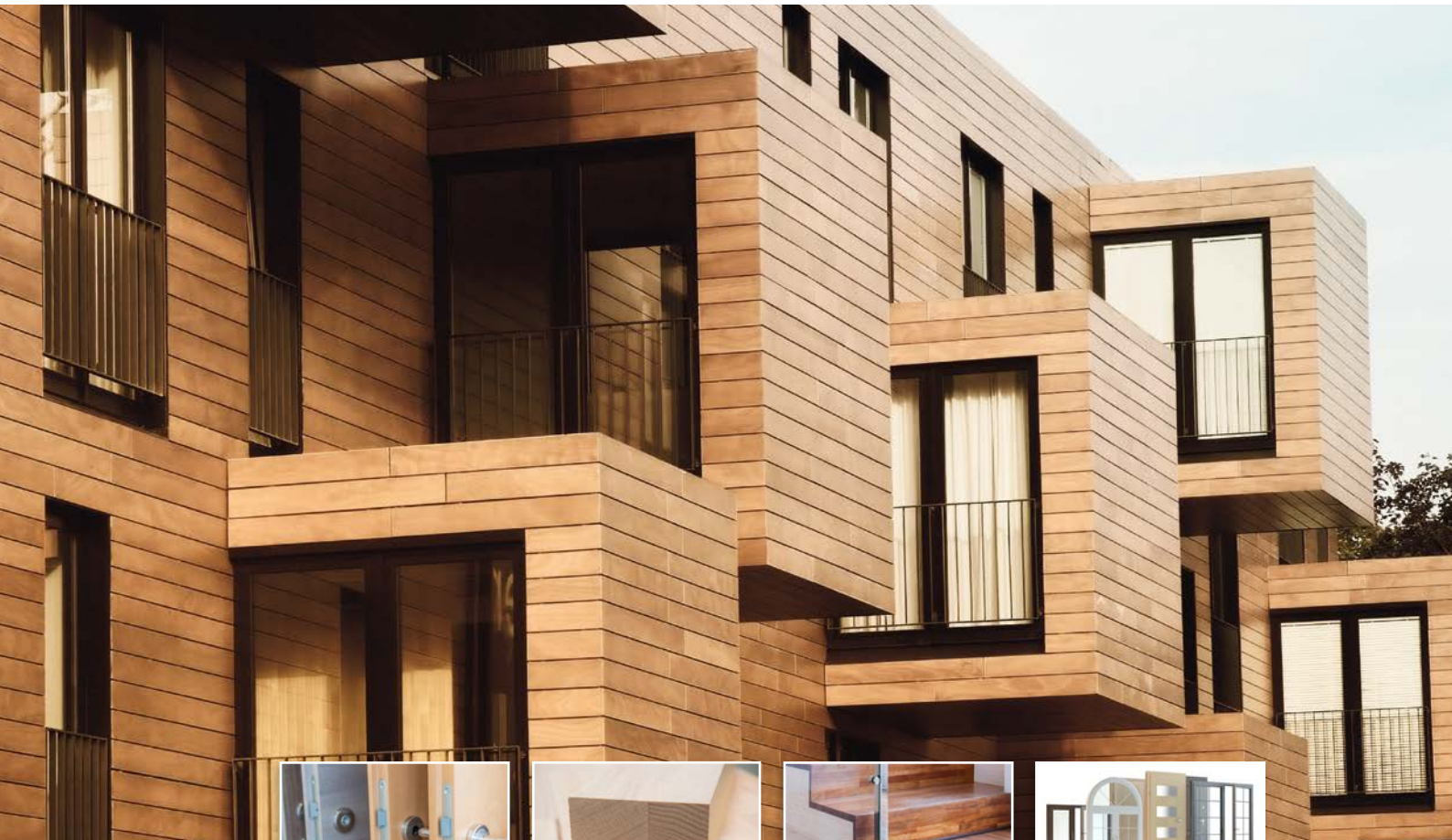


# Water Resistant Bonding

with KLEIBERIT Adhesives



Surface and joint bonding | Profile wrapping | Edge banding



Competence **PUR**

# Water Resistant Bonding with KLEIBERIT Adhesives



## Surface and joint bonding

### KLEIBERIT 303.0

gluing qualities:

D3 according to DIN EN 204

D4 according to DIN EN 204 with hardener KLEIBERIT 303.5

WATT 91 (DIN EN 14257) > 7 N/mm<sup>2</sup>

application methods:

brush, glue roller, trowel, roller, nozzle system

<b>Base:</b>	PVAC dispersion
<b>Density:</b>	approx. 1.1 g/cm <sup>3</sup>
<b>Colour:</b>	white
<b>Viscosity at 20°C</b>	
<b>(Brookfield Sp. 6/20 Upm):</b>	12,000 ± 2,000 mPa·s
<b>Pot life:</b>	with 5% KLEIBERIT 303.5 approx. 24 hours
<b>Open time at 20°C:</b>	6 - 10 minutes

### KLEIBERIT 304.4

gluing qualities:

D4 according to DIN EN 204 with hardener KLEIBERIT 808.0

WATT 91 (DIN EN 14257) > 7 N/mm<sup>2</sup>

application methods:

brush, glue roller, trowel, roller, nozzle system

<b>Base:</b>	polymer dispersion
<b>Density:</b>	approx. 1.3 g/cm <sup>3</sup>
<b>Colour:</b>	brown
<b>Viscosity at 20°C</b>	
<b>(Brookfield Sp. 6/20 Upm):</b>	7,000 ± 1,500 mPa·s
<b>Open time at 20°C:</b>	20 - 25 minutes

### KLEIBERIT 501.0

gluing qualities:

D4 according to DIN EN 204

WATT 91 (DIN EN 14257) > 7 N/mm<sup>2</sup>

application methods:

brush, glue roller, trowel, roller, nozzle system

<b>Base:</b>	polyurethane
<b>Density:</b>	approx. 1.3 g/cm <sup>3</sup>
<b>Colour:</b>	brown
<b>Viscosity at 20°C</b>	
<b>(Brookfield Sp. 6/20 Upm):</b>	7,000 ± 1,500 mPa·s
<b>Open time at 20°C:</b>	20 - 25 minutes

### KLEIBERIT 510.3.30

gluing qualities:

D4 according to DIN EN 204

WATT 91 (DIN EN 14257) > 7 N/mm<sup>2</sup>

application methods:

brush, glue roller, trowel, roller, nozzle system

<b>Base:</b>	polyurethane
<b>Density:</b>	approx. 1.13 g/cm <sup>3</sup>
<b>Colour:</b>	vanilla
<b>Viscosity at 20°C</b>	
<b>(Brookfield Sp. 4/20 Upm):</b>	approx. 18,500 mPa·s
<b>Open time at 20°C:</b>	20 - 25 minutes



accoya® and tricoya® are registered trademarks of Accsys Technologies PLC. Both are highly resistant, chemically modified materials for durable, dimensionally stable end products, suitable for outdoor use. accoya® stands for refined solid wood, mostly used as profile materials. tricoya® stands for refined wood fiber materials, mostly used in form of board materials. Longevity is achieved by modifying the naturally grown wood, usually a wood species with little resistance, through acetylation so that the molecular structure of the previously hygroscopic material is changed in such a way that moisture absorption and moisture binding is greatly reduced. As a rule, the acetylation of wood is achieved by impregnation with an acetic anhydride solution. This causes the hygroscopic hydroxyl groups of the wood cell walls to be esterified. The original hygroscopicity or moisture absorption and moisture binding is thus considerably reduced. Infestation by microorganisms can also be excluded.

The KLEIBERIT adhesives listed in this product brochure have been extensively tested for their suitability for both materials. They have in-house test certificates as well as performance certificates from independent, renowned testing institutes. Besides chemically reactive polyurethane adhesives, a selected PVAC dispersion and an EPI system are available. The processing of both adhesives, which are liquid in the processing state, is similar to the known solid wood gluing processes. Due to the modified water absorption capacity of accoya® and tricoya®, slightly longer pressing times may be necessary. If, on the other hand, a moisture-reactive PUR adhesive is chosen, whether in the form of a liquid prepolymer or as a hotmelt, the addition of moisture may be required for the usual quick setting reaction due to the low to non-existent moisture on the surface of the acetylated material. The optimal processing conditions when using accoya® and tricoya® have to be determined in the form of test runs, as with all other materials that undergo a bonding process. The advantages offered by these wood-based materials quickly outweigh the test effort.

#### KLEIBERIT 706.0.09

gluing qualities:  
 highly heat resistant, watertight, extremely cold resistant and durable bond is attained

application methods:  
 roller, slot nozzle

<b>Base:</b>	polyurethane
<b>Density:</b>	approx. 1.10 g/cm <sup>3</sup>
<b>Colour:</b>	milky white
<b>Auftragstemperatur:</b>	120 °C
<b>Viscosity at 20 °C</b> (Brookfield HBTD 10 Upm):	120 °C: 12,000 mPa·s ± 3,000 mPa·s 140 °C: 6,000 mPa·s ± 2,000 mPa·s
<b>Open time:</b>	1 - 3 minutes

#### KLEIBERIT 706.1.50 ME

gluing qualities:  
 highly heat resistant, watertight, extremely cold resistant and durable bond is attained; IMO FTP Code part 5

application methods:  
 roller, slot nozzle

<b>Base:</b>	polyurethane
<b>Density:</b>	approx. 1.10 g/cm <sup>3</sup>
<b>Colour:</b>	yellowish
<b>Auftragstemperatur:</b>	120-130 °C
<b>Viscosity at 20 °C/40% RH</b> (Brookfield HBTD 10 Upm):	120 °C: 18,000 mPa·s ± 4,000 mPa·s 140 °C: 9,000 mPa·s ± 2,000 mPa·s
<b>Open time:</b>	< 8 minutes

## Edge banding

### KLEIBERIT 707.9.40

gluing qualities:  
highly heat and moisture resistant when using suitable plastic edges  
(e.g. ABS, PP, PVC, etc.)

application methods:  
roller, slot nozzle

**Base:** polyurethane  
**Density:** approx. 1.10 g/cm<sup>3</sup>  
**Colour:** ivory  
**Application temperature:** 120°C -140°C  
**Viscosity**  
**(Brookfield HBTD 10 Upm):** 140 °C: approx. 35,000 mPas

### KLEIBERIT 707.9.58

gluing qualities:  
highly heat and moisture resistant when using suitable plastic edges  
(e.g. ABS, PMMA, PP, PVC, etc.)

application methods:  
roller, slot nozzle

**Base:** polyurethane  
**Density:** approx. 1.10 g/cm<sup>3</sup>  
**Colour:** ivory  
**Application temperature:** 140°C -160°C  
**Viscosity**  
**(Brookfield HBTD 10 Upm):** 140 °C: approx. 80,000 mPas  
160 °C: approx. 45,000 mPas

## Profile wrapping

### KLEIBERIT 704.6

gluing qualities:  
weather-resistant, if plastic films suitable for outdoor use are used

application methods:  
slot nozzle

**Base:** polyurethane  
**Density:** approx. 1.10 g/cm<sup>3</sup>  
**Colour:** transparent  
**Application temperature:** 120°C -140°C  
**Viscosity**  
**(Brookfield HBTD 10 Upm):** 120 °C: approx. 60,000 mPas  
140 °C: approx. 35,000 mPas

Would you like expert advice or do you need more detailed information? Contact us directly by email, phone or visit our website.

**KLEIBERIT Adhesives USA, Inc.**  
109-B Howie Mine Road,  
Waxhaw, NC 28173  
Phone: +1 704 843 3339  
Email: info.usa@kleiberit.com

**KLEIBERIT Adhesives of Canada Inc.**  
45 Sheppard Avenue East, Suite 900,  
M2N 5W9 Toronto, Ontario  
Phone: +1 416 256 5842  
Email: info.canada@kleiberit.com  
www.kleiberit.com

