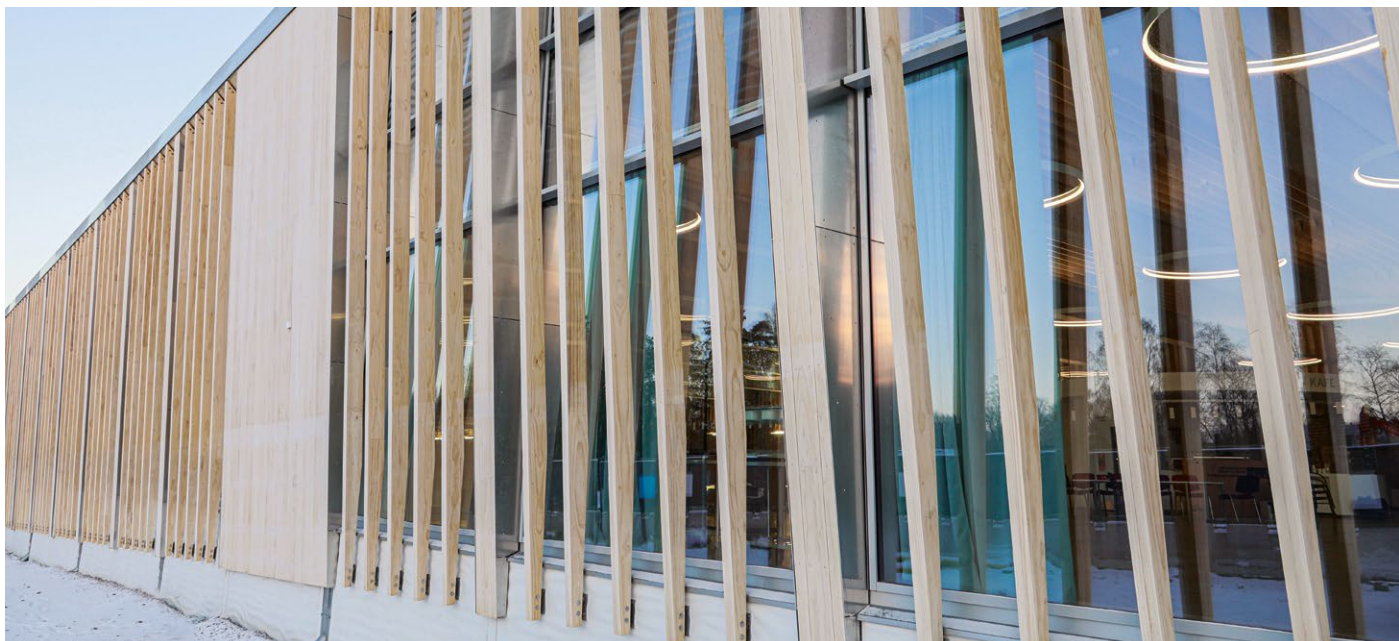


OUTDOOR

Solutions for designing and building in outdoor environments





NAG

LEVELLING PADS



FOCUS	the EPDM material guarantees high strength, does not deform and ensures UV resistance
THICKNESS	2,0 3,0 5,0 mm
DIMENSIONS	60 x 60 mm
USE	substructure levelling



GRANULO

GRANULAR RUBBER SUBSTRATE



FOCUS	water-permeability and vibration-dampening
THICKNESS	4,0 6,0 8,0 10,0 mm
DIMENSIONS	strip, mat, roll, PAD
USE	substrate for substructures in wood, aluminium, WPC and PVC



JFA

ADJUSTABLE SUPPORT FOR TERRACES

A2
AISI 304



FOCUS	can be adjusted from above and below
HEIGHT	40 60 80 mm
DIMENSIONS	Ø8 mm
USE	raising and levelling of the structure



SUPPORT

ADJUSTABLE SUPPORT FOR TERRACES



FOCUS	extreme versatility in levelling
HEIGHT	from 22 to 1020 mm
STRENGTH	from 400 to 800 kg
USE	raising and levelling of the structure



ALU TERRACE

ALUMINIUM PROFILE FOR PATIOS



FOCUS	excellent durability and strength
SECTIONS	53 x 30 x 2200 mm 60 x 50 x 2200 mm
THICKNESS	1,8 2,2 mm
USE	patio substructure



TERRA BAND UV

BUTYL ADHESIVE TAPE



FOCUS	protection against water and UV radiation
DIMENSIONS	75 100 200 400 mm x 10 m
MATERIAL	butyl-based compound coated with black aluminium separating film
USE	decks and facades



KKT COLOR A4 | AISI316

CONE-SHAPED CONCEALED HEAD SCREW



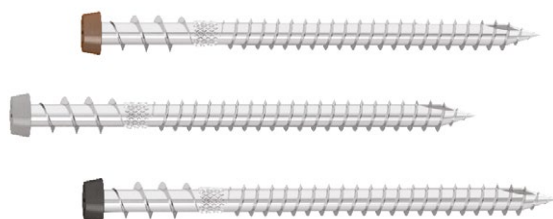
BIT INCLUDED



EN 14592



CALCULATION
TOOL



FOCUS	excellent grip
HEAD	conical, coloured countersunk
DIAMETER	5,0 mm
LENGTH	from 40 to 70 mm



SCI

COUNTERSUNK SCREW



BIT INCLUDED



EN 14592
version
A2 | AISI305

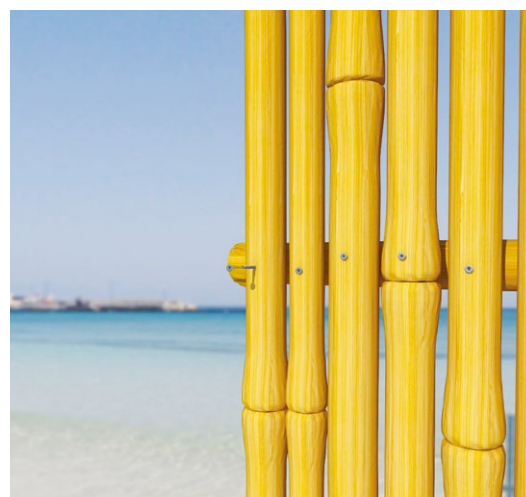


SCI A2 | AISI305



SCI A4 | AISI316

FOCUS	recessed notch, asymmetrical thread, elongated cutter
HEAD	countersunk with ribs
DIAMETER	from 3,5 to 8,0 mm
LENGTH	from 25 to 320 mm



KKZ A2 | AISI304

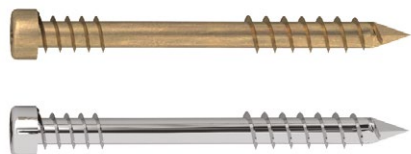
COUNTERSUNK CYLINDRICAL HEAD SCREW

A2
AISI 304



BIT INCLUDED

CE
EN 14592



FOCUS	exceptional hardwood perforation
HEAD	cylindrical, countersunk
DIAMETER	5,0 mm
LENGTH	from 50 to 70 mm



EWS

CONE-SHAPED CONCEALED HEAD SCREW

A2
AISI 305

410
AISI



BIT INCLUDED

CE
EN 14592

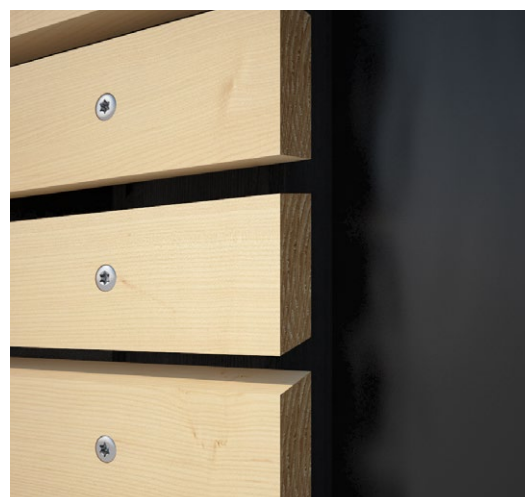


EWS A2 | AISI305



EWS AISI 410

FOCUS	increased diameter for hardwoods
HEAD	convex with ribs
DIAMETER	5,0 mm
LENGTH	from 50 to 80 mm



KKF AISI410

PAN HEAD SCREW

410
AISI



BIT INCLUDED

CE
ETA 11/0030



FOCUS	excellent versatility of use in aggressive environments
HEAD	pan head
DIAMETER	from 4,0 to 6,0 mm
LENGTH	from 20 to 120 mm

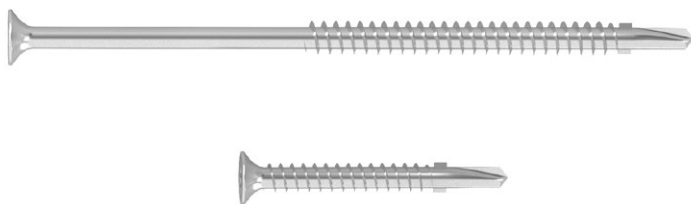


SBS A2 | AISI304

SELF-DRILLING TIMBER-TO-METAL SCREW

A2
AISI 304

BIT INCLUDED



FOCUS	self-perforating tip with protective fins
HEAD	countersunk with under-head ribs
DIAMETER	from 4,8 to 6,3 mm
LENGTH	from 45 to 120 mm



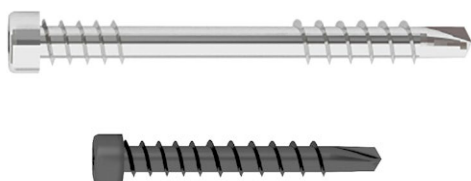
KKA AISI410 | KKA COLOR

SELF-DRILLING SCREW TIMBER-TO-TIMBER | TIMBER-TO-ALUMINIUM SELF-DRILLING SCREW FOR ALUMINIUM

410
AISI

BIT INCLUDED

CALCULATION
TOOL

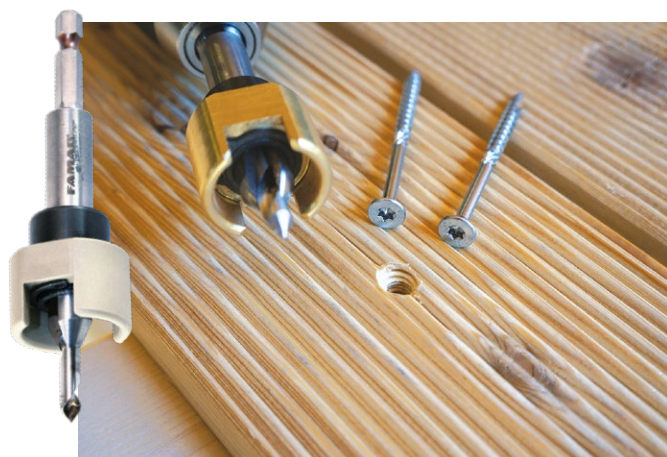


FOCUS	self-drilling timber-to-aluminium self-drilling aluminium
HEAD	cylindrical, countersunk
DIAMETER	4,0 5,0 mm
LENGTH	from 20 to 50 mm



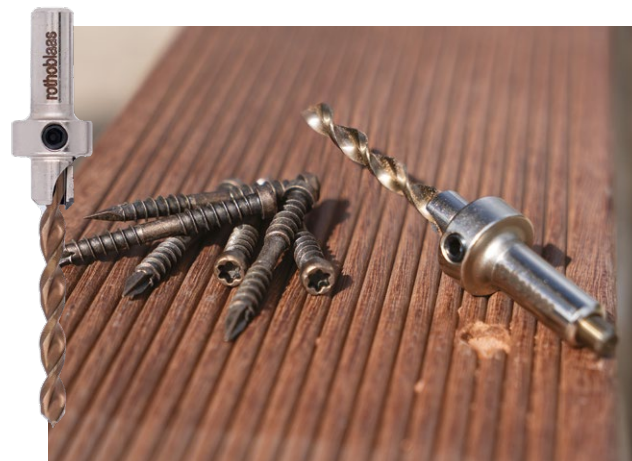
DRILL STOP

SET OF DRILL BITS AND COUNTERBORE CUTTER WITH SWIVEL DEPTH STOP



BROAD

COUNTERBORE CUTTER FOR KKT, KKZ, KKA



FLAT

CONNECTOR FOR DECKING



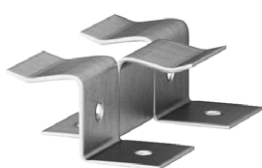
FOCUS	extremely precise joints
MATERIAL	aluminium with organic anti-corrosion coating
BOARDS	symmetrical grooving
JOINTS	7.0 mm
FASTENERS	KKT COLOR, KKA COLOR



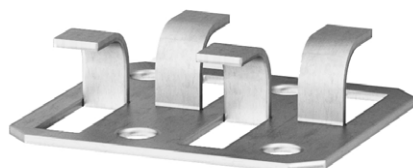
GAP

CONNECTOR FOR DECKING

A2
AISI 304



GAP 3



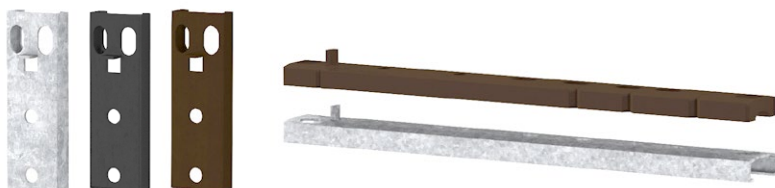
GAP 4

FOCUS	narrow joints
MATERIAL	GAP 3: A2 AISI304 - GAP 4: zinc-plated steel
BOARDS	symmetrical grooving
JOINTS	from 3,0 to 5,0 mm
FASTENERS	SCI, HTS



TERRALOCK

CONNECTOR FOR DECKING



FOCUS	extremely versatile joints and grooves
COATING	aluminium coating, grey, black, brown
BOARDS	without grooving
JOINTS	from 2,0 to 10,0 mm
FASTENERS	KKT, KKA, KKF



TRASPIR EVO UV 210

HIGHLY BREATHABLE MONOLITHIC MEMBRANE
RESISTANT TO UV RAYS



FOCUS	integrated double tape
MATERIAL	monolithic, acrylic mix
DIMENSIONS	1,5 x 50 m
MASS PER UNIT AREA	210 g/m ²



FACADE BAND UV

UNIVERSAL SINGLE-SIDED TAPE, RESISTANT TO
UV RAYS



FOCUS	flexible and adaptable surface
DIMENSIONS	60 mm x 20 m
MATERIAL	polyethylene with reinforcing mesh and acrylic adhesive
USE	façade



LOCK T EVO TIMBER

OUTDOOR CONCEALED HOOK TIMBER-TO-TIMBER CONNECTOR



FOCUS	removable joints for very aggressive environments
TIMBER SECTIONS	from 53 x 80 mm to 160 x 280 mm
STRENGTH	$R_{v,k}$ up to 65 kN
FASTENERS	HBS PLATE EVO, KKF AISI410, LBS EVO



LOCK T TIMBER

CONCEALED HOOK TIMBER-TO-TIMBER CONNECTOR



FOCUS	joints that can be disassembled
TIMBER SECTIONS	from 35 x 80 mm to 200 x 440 mm
STRENGTH	$R_{v,k}$ up to 100 kN
FASTENERS	LBS



LOCK C CONCRETE

CONCEALED HOOK TIMBER-TO-CONCRETE CONNECTOR



FOCUS	joints for concrete that can be disassembled
TIMBER SECTIONS	from 70 x 120 mm to 200 x 440 mm
STRENGTH	$R_{v,k}$ up to 100 kN
FASTENERS	LBS, SKS



ALUMINI

CONCEALED BRACKETS WITHOUT HOLES



FOCUS	concealed joints
TIMBER SECTIONS	from 45 x 70 mm to 140 x 280 mm
STRENGTH	$R_{v,k}$ up to 36 kN
FASTENERS	HBS PLATE EVO, SBD, STA, SKS



ALUMIDI

CONCEALED BRACKETS WITH AND WITHOUT HOLES

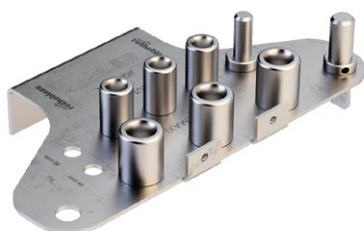


FOCUS	concealed joints
TIMBER SECTIONS	from 80 x 100 mm to 200 x 520 mm
STRENGTH	$R_{v,k}$ up to 150 kN
FASTENERS	LBA, LBS, SBD, STA, SKR



JIG ALU STA

DRILLING TEMPLATE FOR ALUMIDI AND ALUMAXI



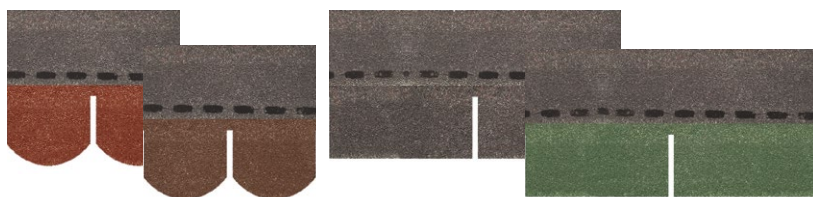
See also:

STA
SMOOTH DOWEL



SHINGLE

BITUMINOUS TILE



FOCUS	rectangular or beavertail
YIELD	2,0 m ² / box
MATERIAL	glass fibre coated bitumen with coloured mineral grit
COLOURS	red, brown, green, black



BYTUM SLATE 3500

SELF-ADHESIVE SLATED BITUMINOUS MEMBRANE



A Önorm B4119 E-d0 nsk	D ZVDH USB-B UDB-C	CH SIA 232 Vvo. UD (fU)
F DTU 31.2 pare-va- peur E1 Sd3 TRI	I UNI 11564 P SR1A	AUS AS/NZS 4200.1 Class 1
USA IRC Class 1		

FOCUS	self-adhesive and self-sealing
DIMENSIONS	1,0 x 10 m
MATERIAL	self-adhesive bitumen coated in slate
COLOURS	red, grey, green, white

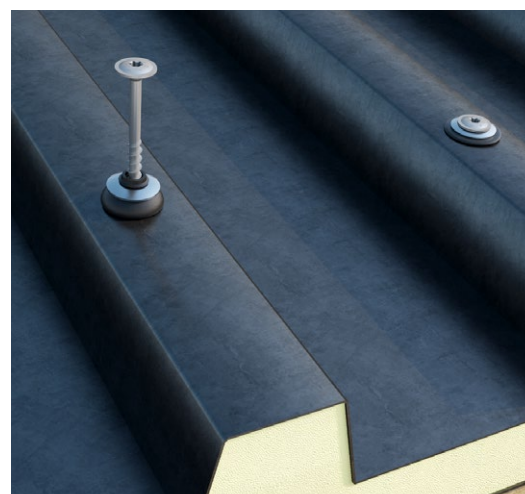


WBAZ

STAINLESS STEEL WASHER WITH SEALING GASKET



FOCUS	water-tightness and UV strength
GASKET	EPDM
SCREWS DIAMETER	from 6,0 to 6,5 mm
FASTENING	TBS EVO, MTS A2 AISI304





DISC FLAT A2

REMOVABLE CONCEALED CONNECTOR

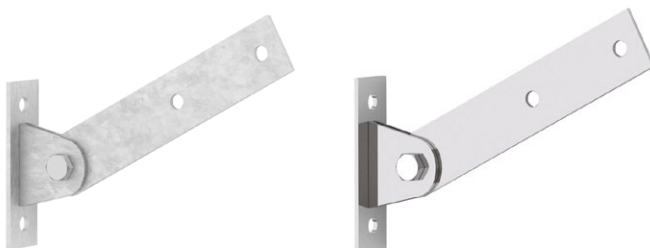


FOCUS	universal joints
TIMBER SECTIONS	from 100 x 100 mm to 280 x 280 mm
STRENGTH	R_v over 40 kN, R_{ax} over 70 kN
FASTENERS	KKF AISI410, KOS A2

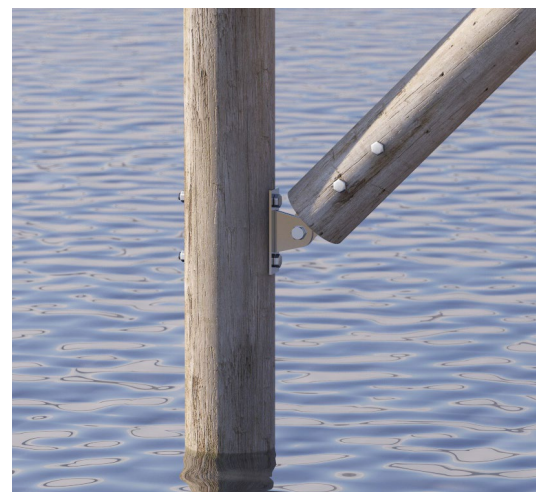


BRACE

HINGED PLATE



FOCUS	concealed joints
COLUMNS	from 80 x 80 mm to 200 x 200 mm
ROUND COLUMN	from Ø80 to Ø160 mm
FASTENERS	HBS PLATE EVO, KOS, KOT A2



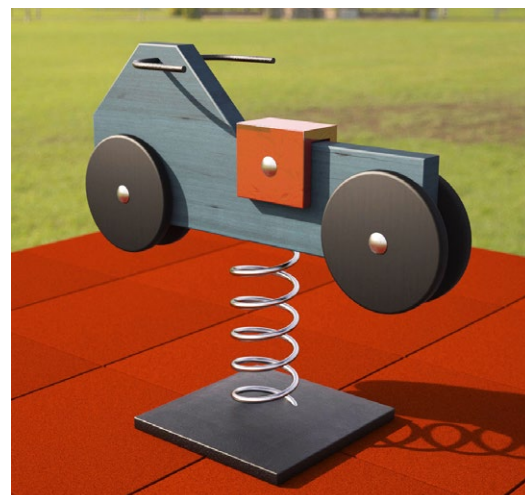
KOT A2 | AISI304

ROUND HEAD BOLT

A2
AISI 304



MATERIAL	A2 AISI304 stainless steel
LENGTH	from 50 to 300 mm
DIAMETER	from M8 to M12
GEOMETRY	DIN 603 (ISO 8677)



MGS AI 975

THREADED ROD

A2
AISI 304



MATERIAL	A2 AISI304 stainless steel
LENGTH	1000 mm
DIAMETER	from M8 to M20
GEOMETRY	DIN 975



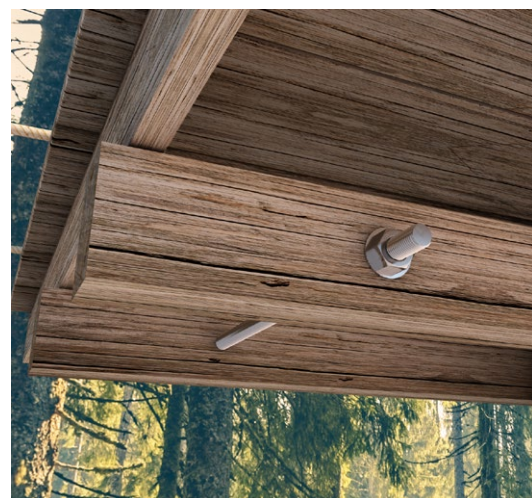
Uls AI 9021

WASHER

A2
AISI 304



MATERIAL	A2 AISI304 stainless steel
THICKNESS	from 2 to 4 mm
ROD DIAMETER	from M8 to M20
GEOMETRY	DIN 9021 (ISO 7093)



MUT AI 934

HEXAGONAL NUT

A2
AISI 304



MATERIAL	A2 AISI304 stainless steel
THICKNESS	from 6,5 to 16 mm
ROD DIAMETER	from M8 to M20
GEOMETRY	DIN 934 (ISO 4032)



MUT AI 1578

BLIND NUT

A2
AISI 304

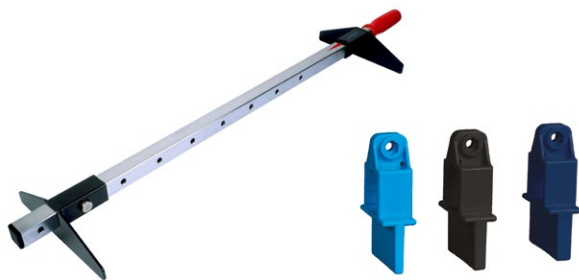


MATERIAL	A2 AISI304 stainless steel
THICKNESS	from 18 to 34 mm
ROD DIAMETER	from M10 to M20
GEOMETRY	DIN 1587



CRAB MAXI

BOARD CLAMP, LARGE MODEL



FOCUS	swivel handle for precise adjustments
USE	to tension from 5 to 7 boards together
OPENING	from 200 to 770 mm



STAR

STAR FOR DISTANCES

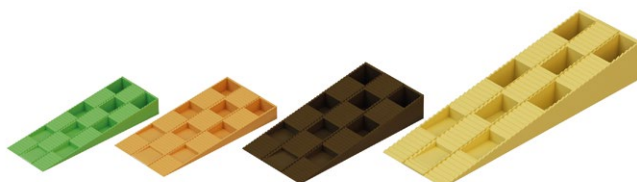


FOCUS	the 5 most common dimensions in a single tool
USE	creation of uniformly sized joints
THICKNESS	from 4 to 8 mm



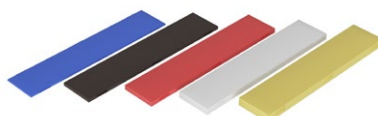
WEDGES

LEVELLING WEDGES



See also:

SHIM
COMPENSATION AND SHIMMING
SPACERS



FASTENING

Screws for timber | Plates and connectors | XEPOX epoxy adhesive
CLT slab-to-column connections | Terraces and facades
Anchors for concrete

AIRTIGHTNESS AND WATERPROOFING

Tapes and sealants | Roof and ventilation elements | Membranes

SOUNDPROOFING

Resilient profiles | Soundproofing layers | Sealants

FALL PROTECTION

Lifeline and rail systems | Anchor points | Collective protection
Personal Protective Equipment

TOOLS AND MACHINES

Carpentry tools | Measurement | Templates | Construction site protection
Transport and Lifting | Wood repair | Drill bits and cutters |
Machines



THE RIGHT TRAINING FOR A SUCCESSFUL FUTURE!

Training programmes that deal with the most current topics in the field of designing and constructing timber buildings, but not limited to. Qualified speakers and stimulating teaching programmes: the perfect combination to keep up to date with the main topics related to the world of timber constructions.



Discover all our courses!
www.rothoblaas.com/school



Rotho Blaas Srl

Via dell'Adige N.2/1 | 39040, Cortaccia (BZ) | Italia
Tel: +39 0471 81 84 00 | Fax: +39 0471 81 84 84
info@rothoblaas.com | www.rothoblaas.com

